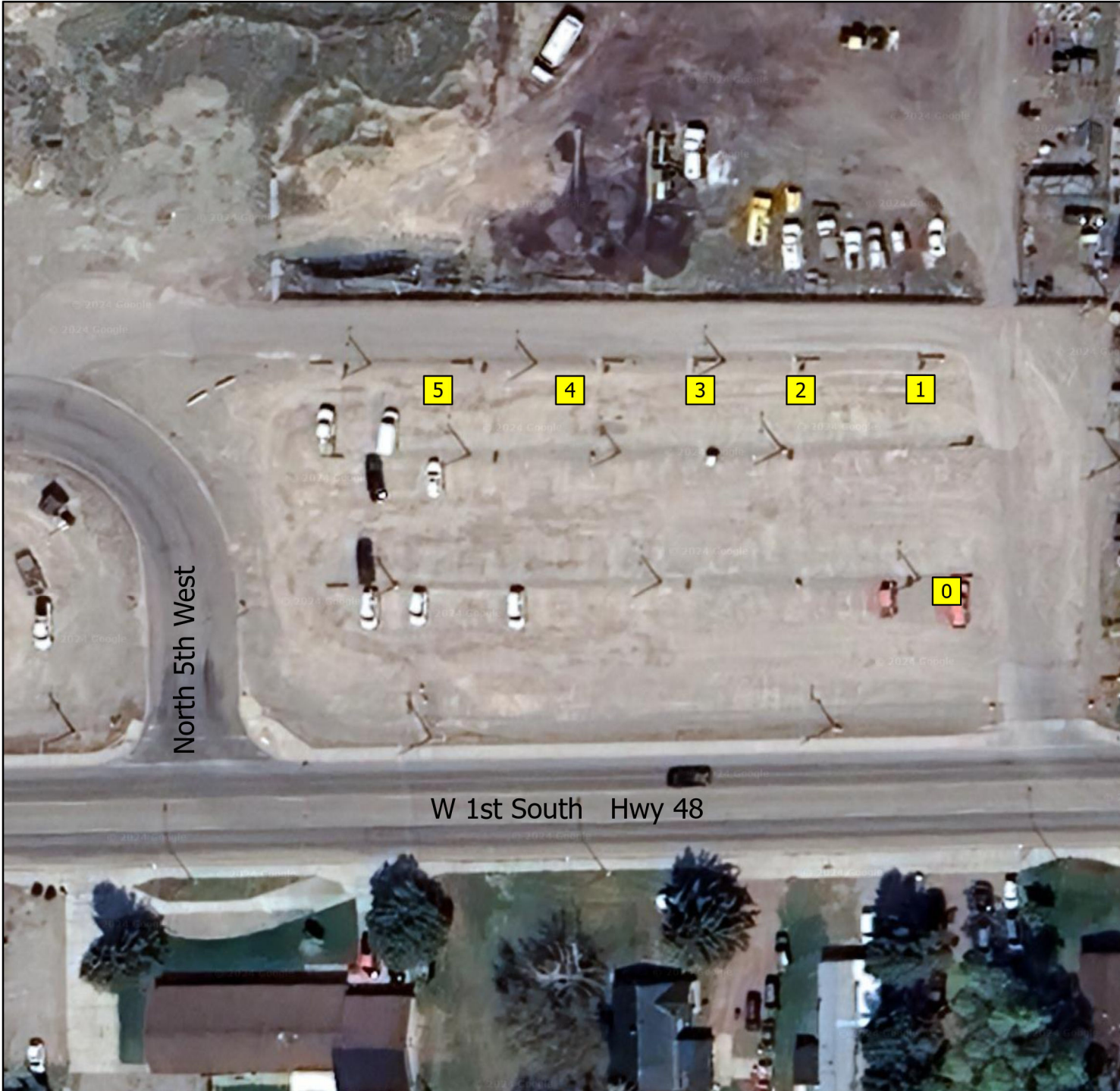




# Rigby Park-n-Ride

520 West 1st South Rigby, Idaho 83442

Last Updated: 1/20/2025



## Load Positions

**Load Point 0**

**Load Point 1**

**Load Point 2**

MFC Rt. 570 5:45 am

NRF Rt. 584 Swing 12:20 pm (Mon-Thu)

**Load Point 3**

NRF Rt. 560 4:10 am (Mon-Thu)

NRF Rt. 551 5:05 am (Mon-Fri)

IEC Rt. 502 5:20 am (Mon-Thu)

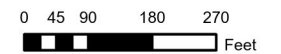
(INTEC/RWMC/NRF D&D)

**Load Point 4**

ATR/CFA Rt. 504 5:24 am

SMC Rt. 580 5:45 am (Mon-Thu)

**Load Point 5**



GIS Analyst: Mindy Gerdes  
Date Drawn: 1/14/2025  
Path: Z:\Projects\INL\BusZones\BusZones.aprx  
File Name: Rigby.pdf  
<https://geospatial.inl.gov>