



Westside Park-n-Ride

2455 West Broadway Idaho Falls, Idaho 83402

Last Updated: 10/30/2023

Load Positions

Load Point 1

NRF Rt. 60 4:20 am (Mon-Thu)
NRF Rt. 65 4:35 am (Mon-Thu)
NRF Shift Rt. 83 5:25 am (Mon-Sun & hol)

NRF Swing Rt. 584 12:40 pm (Mon-Thu)
NRF Shift Rt. 83 5:25 pm (Mon-Sun & hol)

Load Point 2

NRF Rt. 66 4:35 am (Mon-Thu)
CFA Express Rt. 134 5:32 am (Mon-Thu)
RWMC Express Rt. 33 5:37 am (Mon-Thu)
CFA Rt. 8 5:56 am (Mon-Thu)

Load Point 3

NRF Rt. 67 4:35 am (Mon-Thu)
MFC +1 5:12 am (Mon-Thu)
ATR Express Rt. 35 5:32 am (Mon-Thu)
MFC Shift Rt. 125 5:47 am (Mon-Thu)
MFC Shift Rt. 125 6:02 am (Fri-Sun & hol)
ATR Rt. 4 5:57 am (Mon-Thu)
MFC Rt. 109 6:17 am (Mon-Thu)

All CFA Shuttles (Mon-Thu)

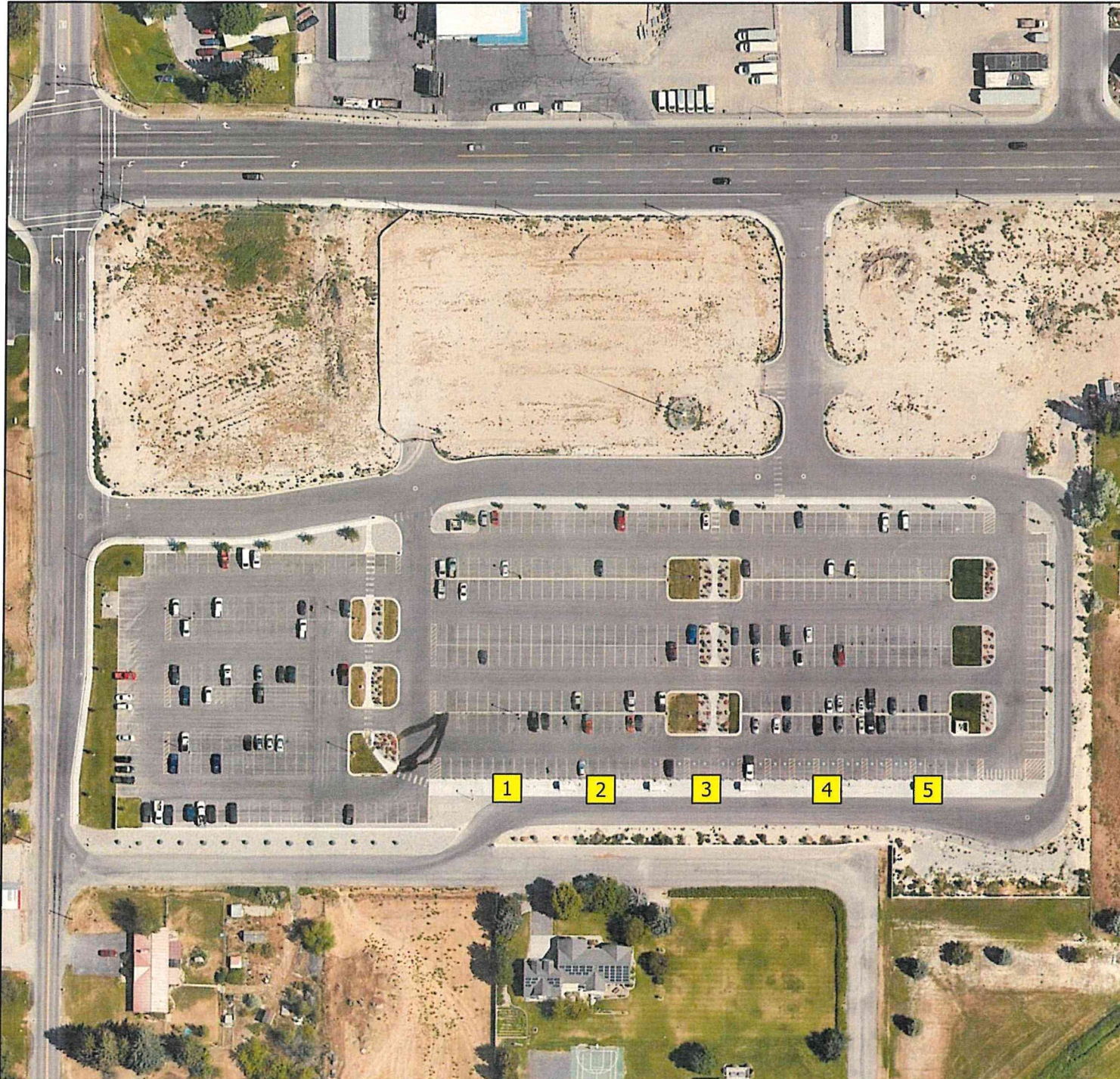
MFC Shift Rt. 125 6:02 pm (Mon-Sun & hol)

Load Point 4

INTEC Express Rt. 122 5:32 am (Mon-Thu)
BEA/IEC Shift Rt. 31 5:42 am (Fri-Sun & hol)
IEC Rt. 9 5:45 am (Mon-Thu)
(INTEC/RWMC)

BEA/IEC Shift Rt. 31 5:42 pm (Mon-Sun & hol)

Load Point 5



GIS Analyst: Mindy Gerdes
Date Drawn: 10/25/2023
Path: Z:\Projects\INL\BusZones\BusZones.aprx
File Name: Westside.pdf
<https://geospatial.inl.gov>