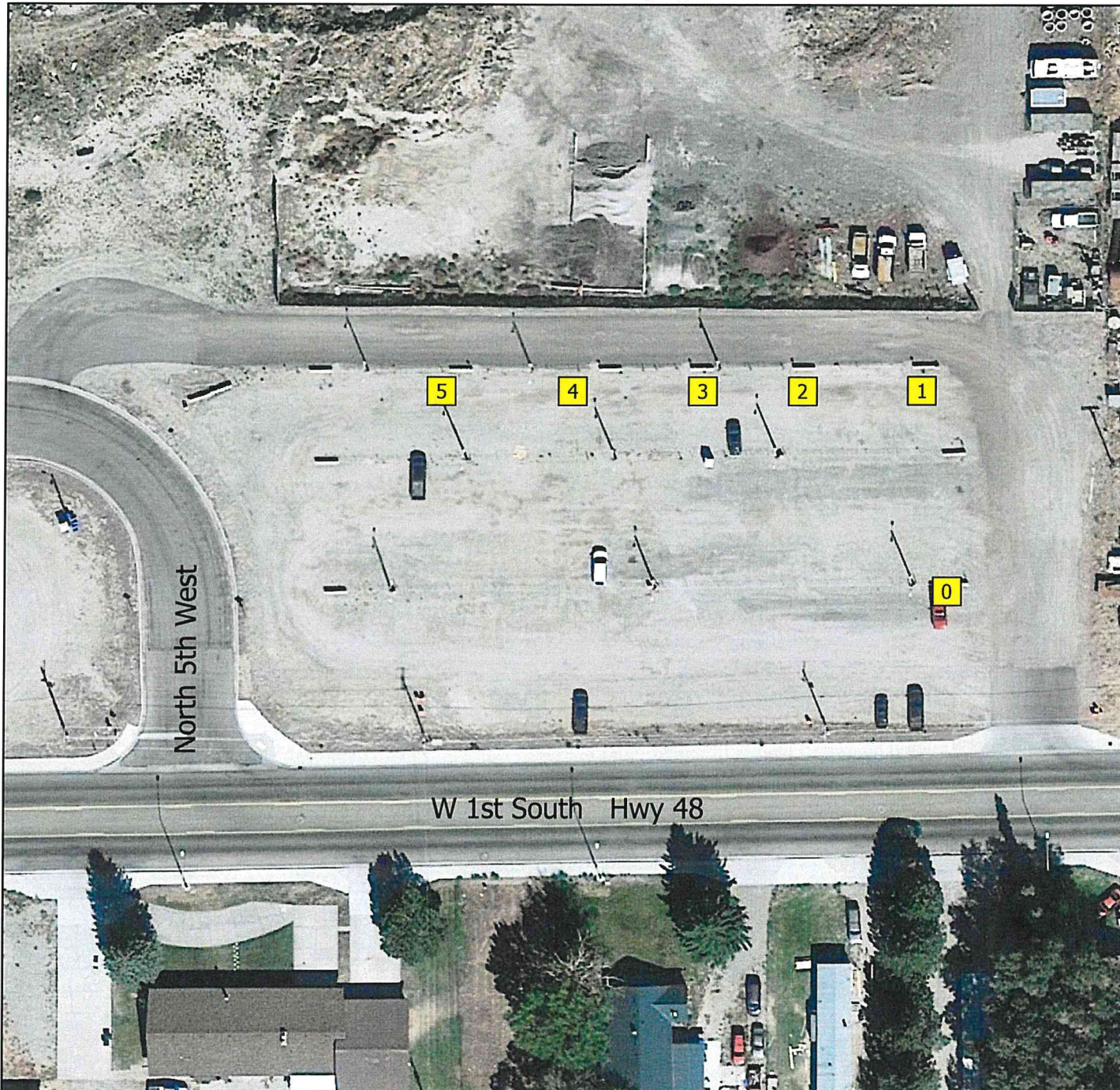




Rigby Park-n-Ride

520 West 1st South Rigby, Idaho 83442

Last Updated: 4/3/2023



Load Positions

Load Point 0

Load Point 1

Load Point 2

MFC Rt. 570 5:45 am

NRF Rt. 584 Swing 12:20 pm (Mon-Thu)

Load Point 3

NRF Rt. 560 4:10 am (Mon-Thu)

NRF Rt. 551 5:10 am (Mon-Fri)

IEC Rt. 502 5:20 am (Mon-Thu)

(INTEC/RWMC/NRF D&D)

Load Point 4

ATR/CFA Rt. 504 5:24 am

SMC Rt. 512 5:45 am (Mon-Thu)

Load Point 5

0 45 90 180 270
Feet

GIS Analyst: Mindy Gerdes
Date Drawn: 3/27/2023
Path: Z:\Projects\INL\BusZones\BusZones.aprx
File Name: Rigby.pdf
<https://geospatial.inl.gov>