

# REC to Blackfoot/Pocatello (Mon-Thu and working Fri)

Last Updated: 6/9/2025

## Load Positions Monday -Thursday

### Load Point 1

Energy Innovation Lab (EIL) - 4:35 pm  
at East door by bus turn out

### Load Point 2

Engineering Research Office Building (EROB) - 4:37 pm  
at North door

### Load Point 3

Willow Creek Building (WCB) - 4:39 pm  
at West door

## Working Fridays

### Load Point 1

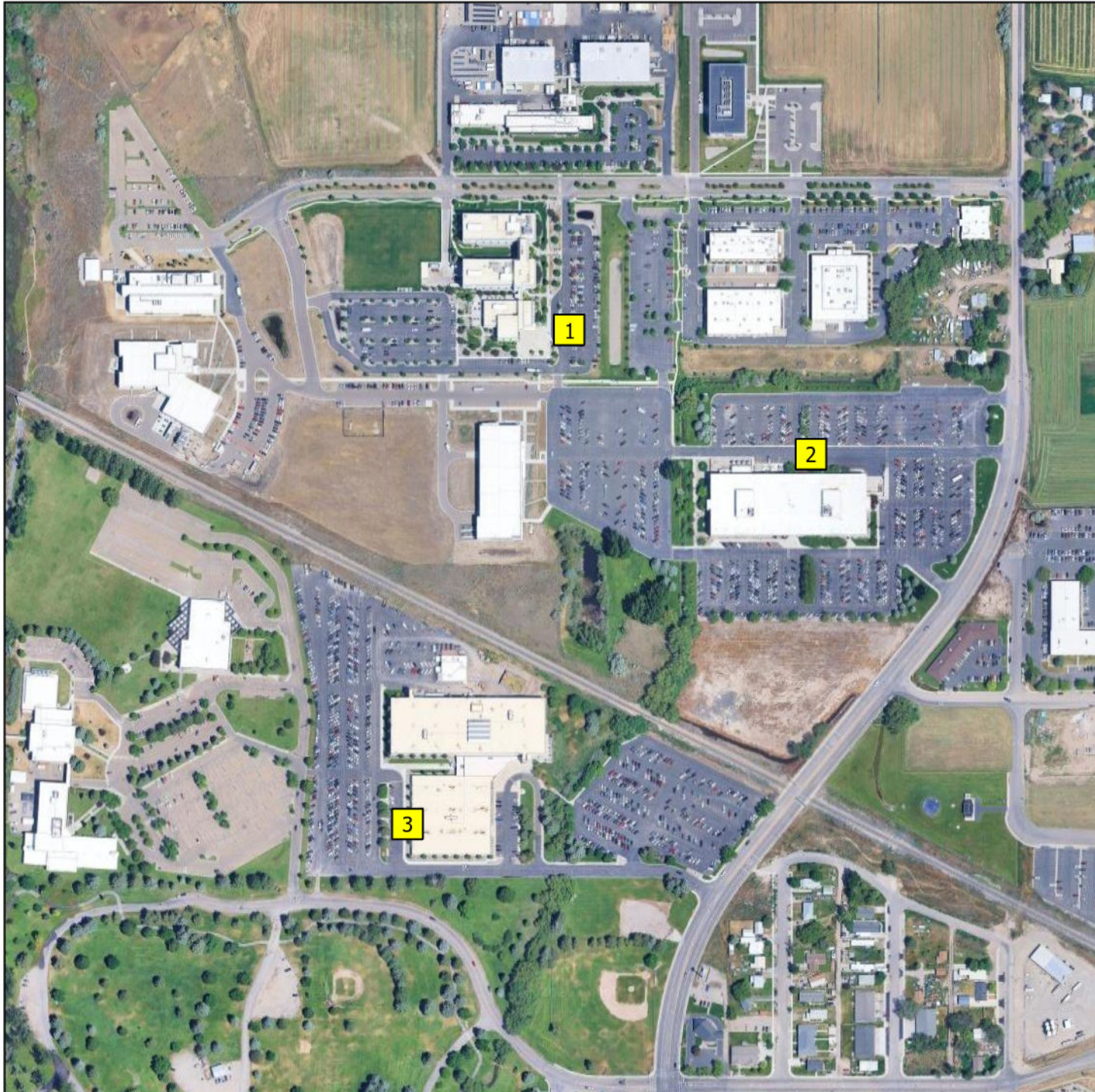
Energy Innovation Lab (EIL) - 3:35 pm  
at East door by bus turn out

### Load Point 2

Engineering Research Office Building (EROB) - 3:37 pm  
at North door

### Load Point 3

Willow Creek Building (WCB) - 3:39 pm  
at West door



GIS Analyst: Glenn Russell  
Date Drawn: 5/28/2025  
Path: Z:\Projects\INL\BusZones\BusZones.aprx  
File Name: RECshuttleBlackfootPocatello.pdf