

# MFC Division Leadership



**Ronald Crone**  
MFC Associate  
Lab Director



**Sheri Andreason**  
Executive Administrator



**Janice Cook**  
Business Operations Staff



**Shawn Hill**  
MFC Reactors



**Timothy Hyde**  
Fuel Fabrication & Nuclear  
Materials Management



**Stephen Johnson**  
Space Nuclear Power &  
Isotope Technologies



**Donna O'Kelly**  
MFC Fuel Cycle



**Sadie Butler**  
MFC Radioactive Material  
& Transportation (*Acting*)



**Douglas Crawford**  
Reactors Chief  
Technologist



**Colin Judge**  
Characterization and  
Post-Irradiation Examination



**Donna O'Kelly**  
Analytical Research  
Laboratories



**Abdul Dullo**  
MFC Chief Scientist



**Tiffany Leavitt**  
MFC Business



**Stuart Jensen**  
MFC Engineering



**Donald Abercrombie**  
MFC Maintenance  
Infrastructure & Fabrication



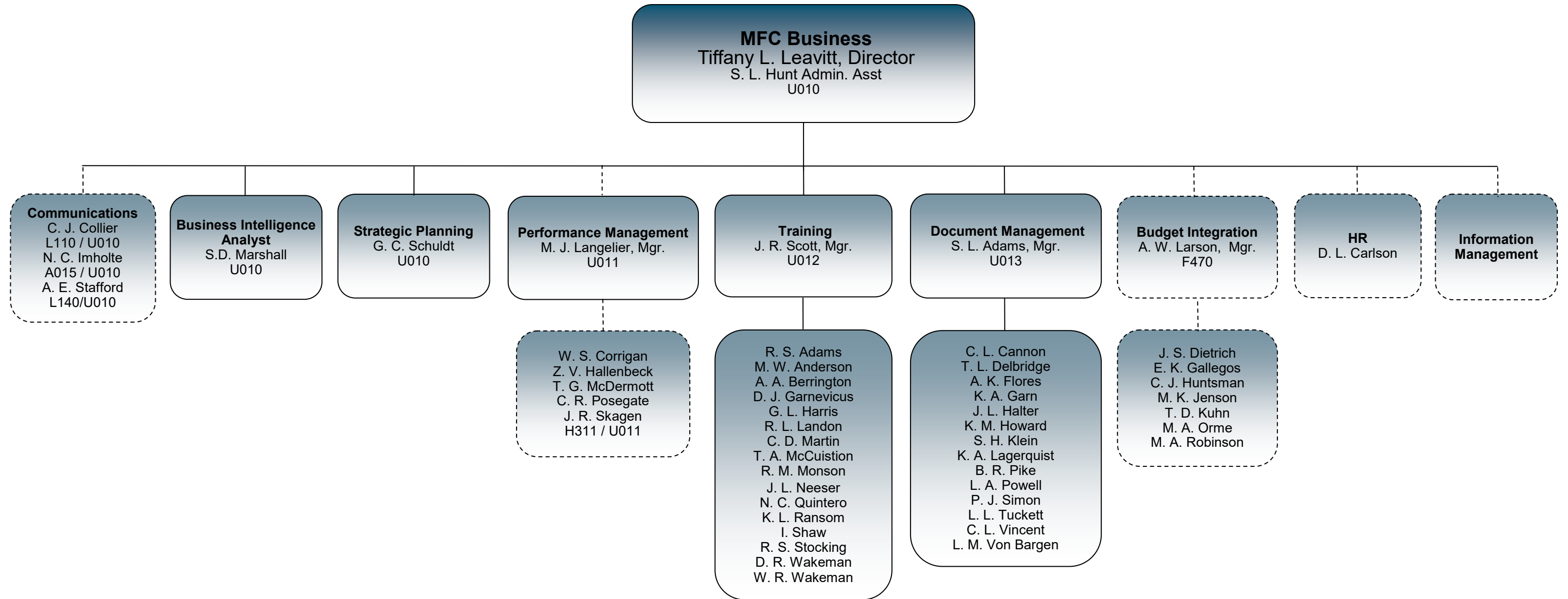
**David Coates**  
MFC Chief Operating  
Officer



**Brady Orchard**  
MFC Projects

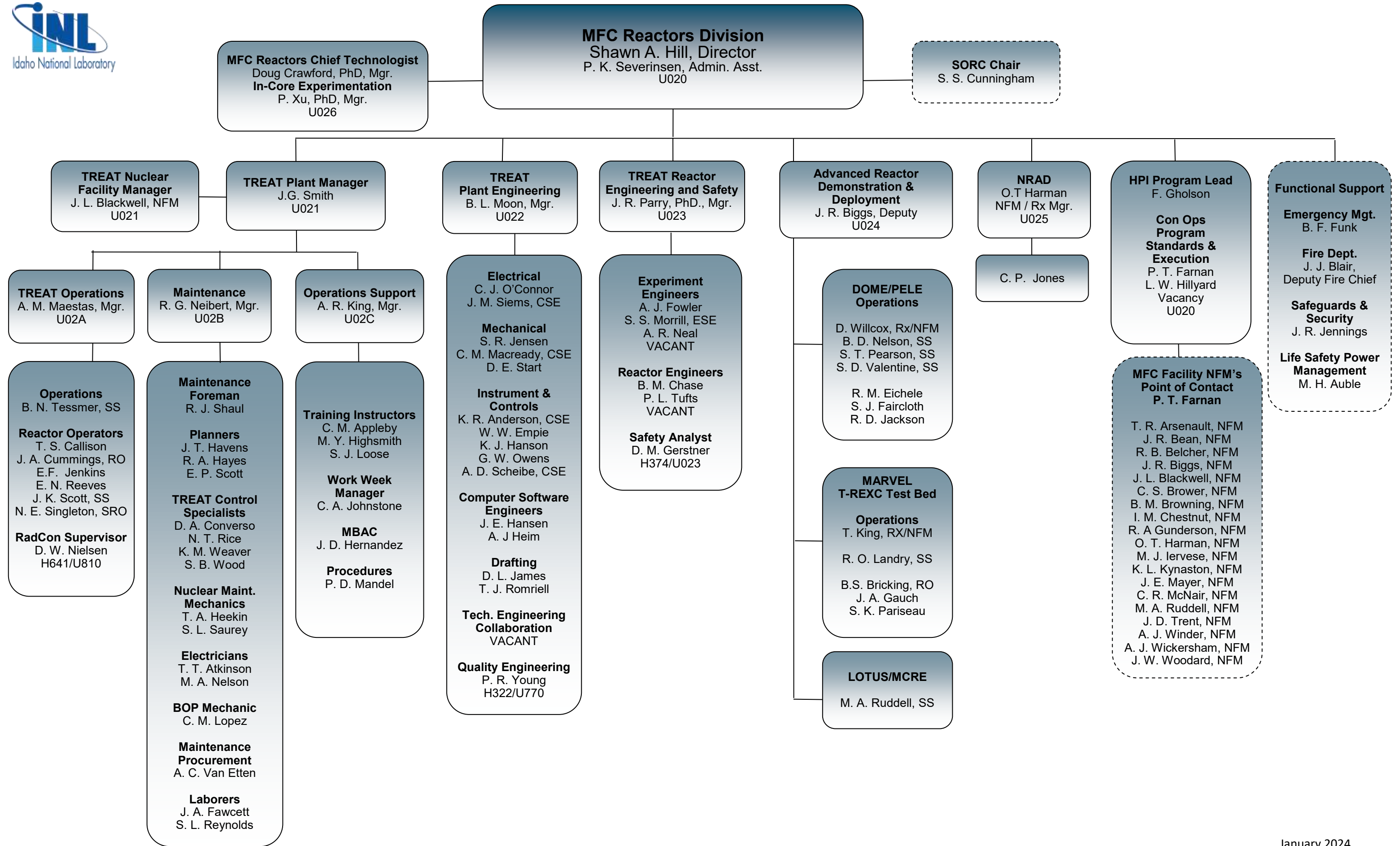


**Alan Carvo**  
MFC Safety &  
Compliance

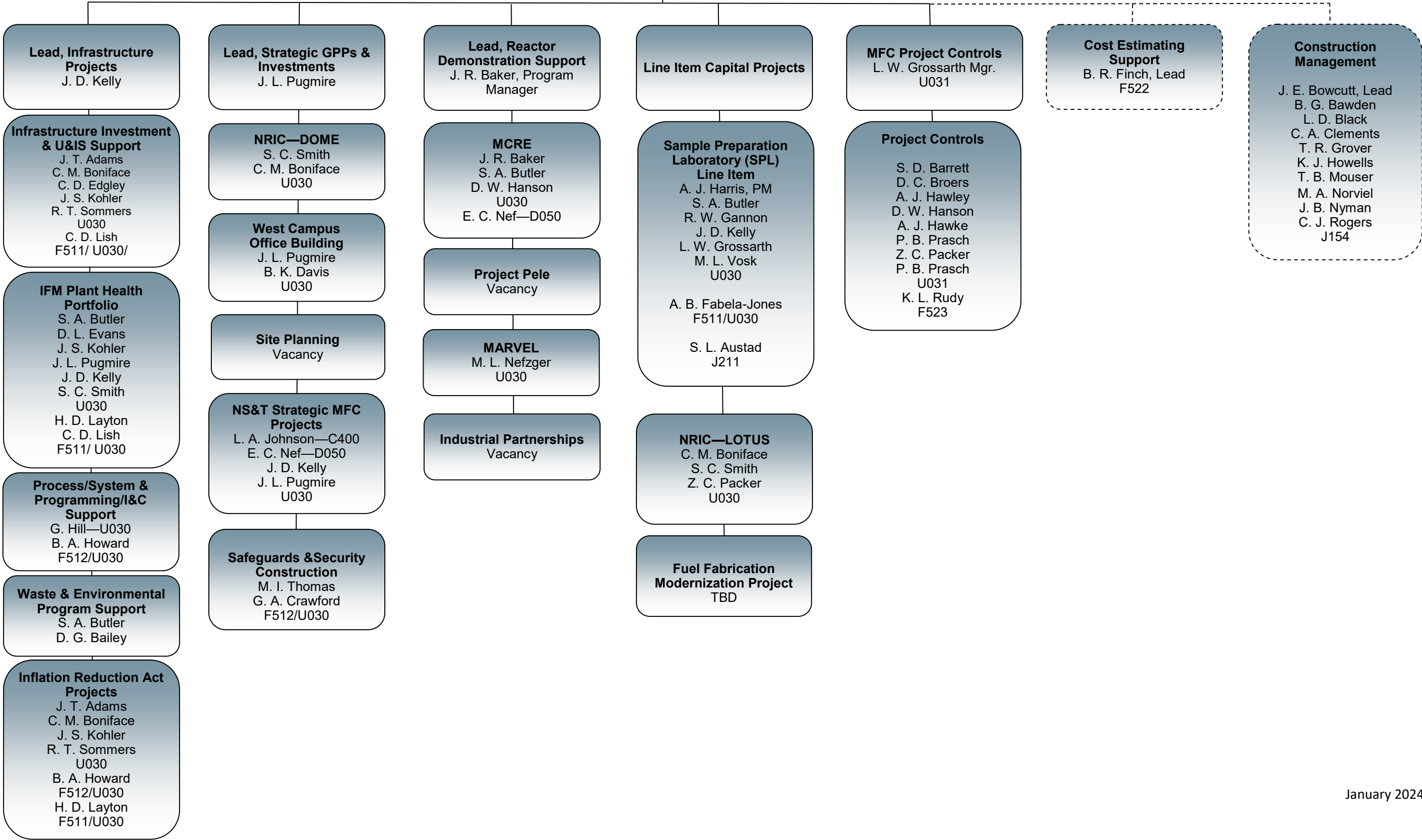


\*Dual Role

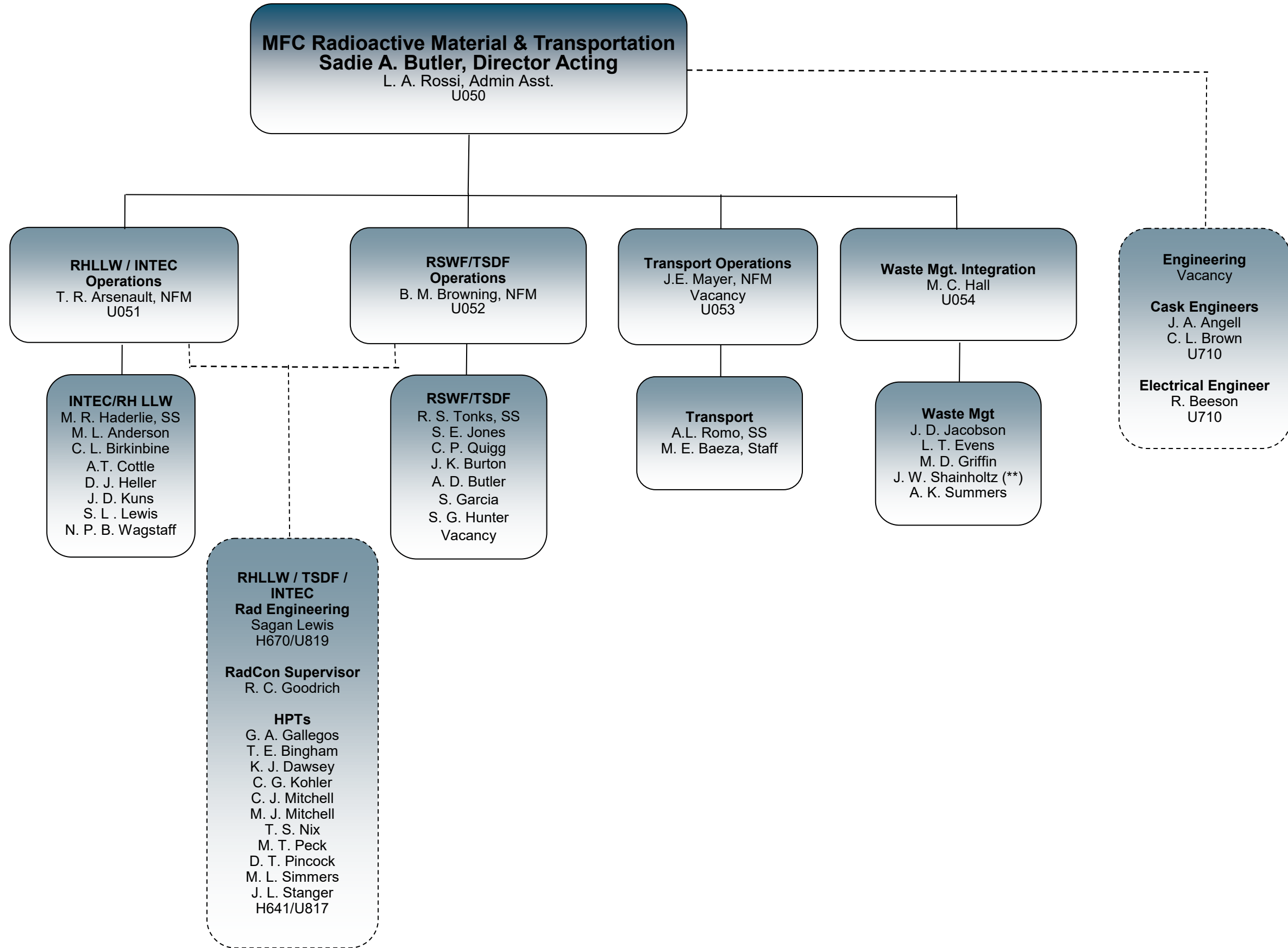
January 2024



**MFC Projects**  
 Brady J. Orchard, Director  
 S.A. Butler, Deputy Director  
 S. L. Hunt, Admin. Asst  
 U030

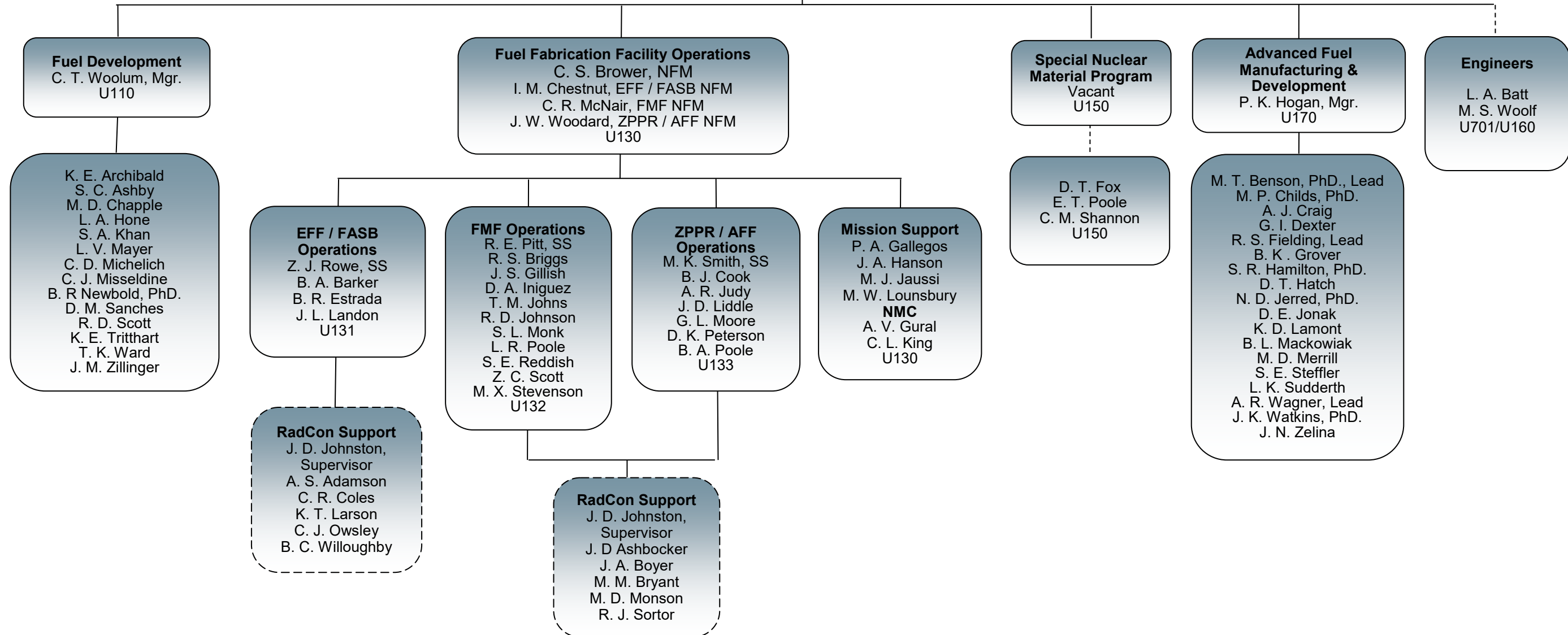






**Facilities**  
 INTEC  
 RHLLW  
 TSDF  
 RSWF

**Fuel Fabrication &  
Nuclear Material Management**  
Timothy A. Hyde, Director  
J. L. Shurtliff, Admin. Asst.  
U100



- Facilities**
- FMF
  - ZPPR
  - FASB
  - EFF
  - AFF

**Characterization & Post-Irradiation Examination**  
 Colin D. Judge, PhD., Director  
 C. Lord, Scientific Admin. Asst.  
 S. Hathaway Operations Admin Asst.  
 U200

**Post-Irradiation Mission—U210**

**Structural Materials PIE—U220**

**Advanced Fuels:**  
**Scientific Lead**  
 F. Cappia, PhD.  
**Reactor Structural Materials:**  
**Scientific Lead**  
 M. G. Burke, PhD.  
**Characterization:**  
**Scientific Lead**  
 J. Gan, PhD.  
**NRAD:**  
**Scientific Lead**  
 A. E. Craft, PhD.

**Fuels Post Irradiation Examination**  
 F. Cappia, PhD., Mgr.  
 U210

**Mission Support**  
 J.T. Goff  
**Scheduling**  
 K.G. Williams

**HFEF Research Operations**  
 J.R. Bean, NFM  
 A.J. Wickersham, NFM  
 Q. D. Anderson, SS  
 J. Bailey, SS  
 U211

**HFEF Nuclear Facility Operations**  
 A. D. Bowman, Lead  
 D.J. Butikofer  
 G.T. Hansen  
 J.M. Kraft  
 D.E. Newman  
 N.L. Smith  
 M. D. Sweet  
 C.E. Woolstenhulme

**HFEF Research Operations**  
 J.B. Kirkham, Lead  
 Research Foreman  
 J.C. Frongner,  
 Cask Crew Lead  
 B.K. Allen  
 C.L. Anderson-Thueson  
 M.A. Babcock  
 D.R. Ballock  
 C.L. Barger  
 R.D. Cox  
 J.M. Fox  
 D.A. Fullmer  
 J.T. Graham  
 C.S. Anderson-Ghezzi  
 D. P. Guthrie  
 S.M. Haney  
 B.L. Howerton  
 N.A. Ingle  
 A. Izucar-Ramirez  
 S.M. James  
 B.W. Kajganich  
 M.L. Larson  
 K.L. Layland  
 J. Maupin  
 A.R. Poole  
 S.A. Powderly  
 J.A. Regguinti  
 R. Snyder  
 J.L. Wise  
 C.G. Dykman

**Mission Support**  
 M.D. Griffin  
 D.R. Hendricks  
 D.E. James  
 R.D. Kraushaar  
 J.L. Wilding  
 U760 / U211

**Supervisor**  
 D. A. Hollaway  
 (HFEF, NRAD)  
 H642/U812

**HPTs**  
 R. L. Alley  
 A. R. Friedel  
 K. J. Hague  
 T. L. Martin  
 J. J. Orner  
 C. L. Perry  
 D. F. Tranter  
 T. M. Villegas  
 A. D. Wren  
**Crew A Radcon**  
 G. T. Hinckley  
 T.J. Leatham  
**Crew B Radcon**  
 R. L. Beck  
 A. L. Fowers  
**Nights**  
 J. R. Gerard

**Structural Materials PIE**  
 B.D. Miller, PhD., Mgr.  
 U220

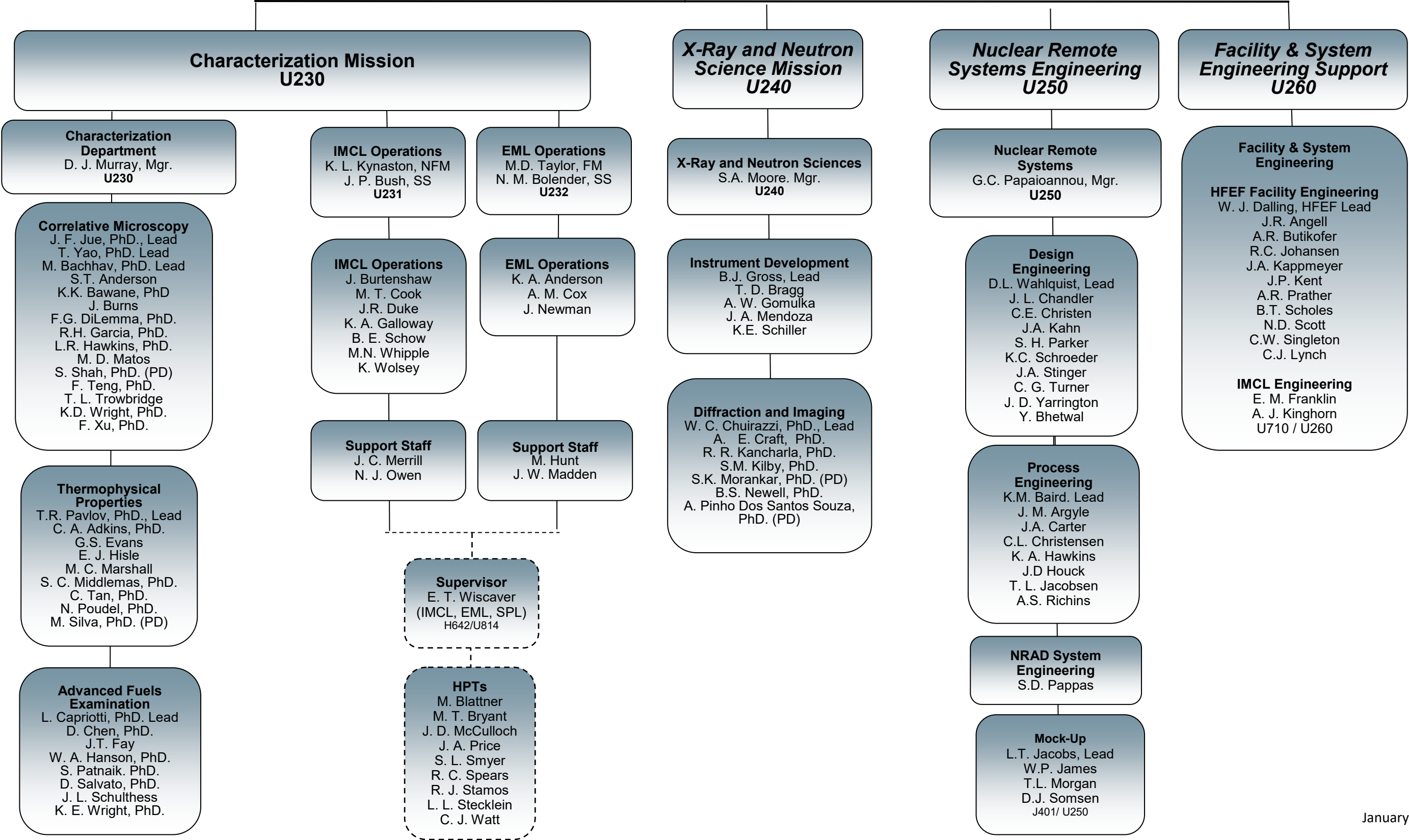
**Reactor Structural Materials**  
 R.A. Bouffioux  
 A.W. Colldeweih, PhD.  
 T. M. Copeland-Johnson, PhD.  
 S. Dasari, PhD. (PD)  
 R.S. Hansen, PhD.  
 C.A. Howard, PhD.  
 A. Kamoj, PhD. (PD)  
 B. Kombaiah, PhD.  
 P.G. Petersen

**SPL Operations**  
 J. D. Trent, NFM  
 C. G. Killian, SS  
 U221

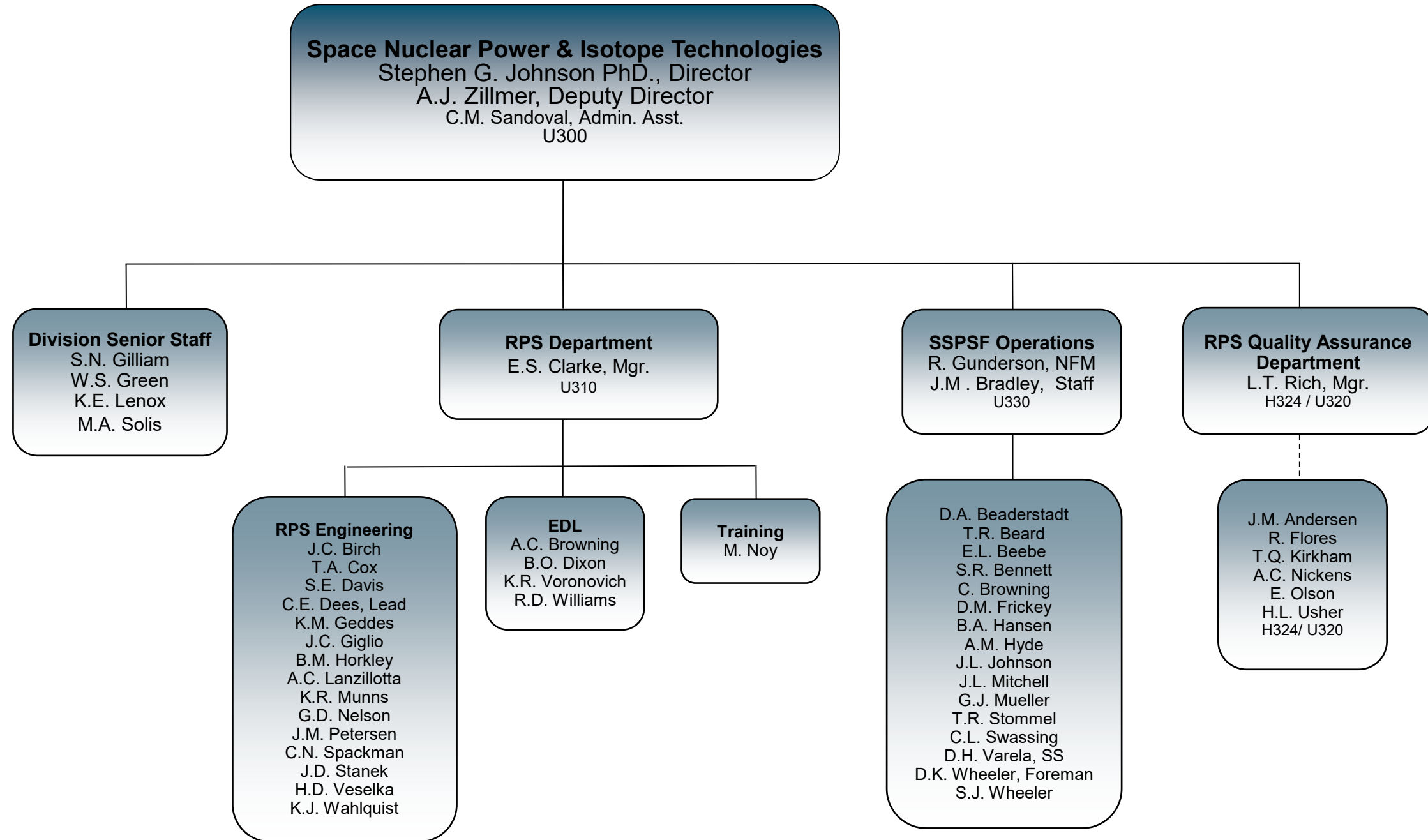
**SPL Research & Operations Lead**  
 Vacancy

**SPL Operations**  
 J.D. Ellis  
 J.R. Howard  
 Z. D. Nelson  
 J.D. Park  
 M.A. Wethington  
 Vacancy  
 Vacancy

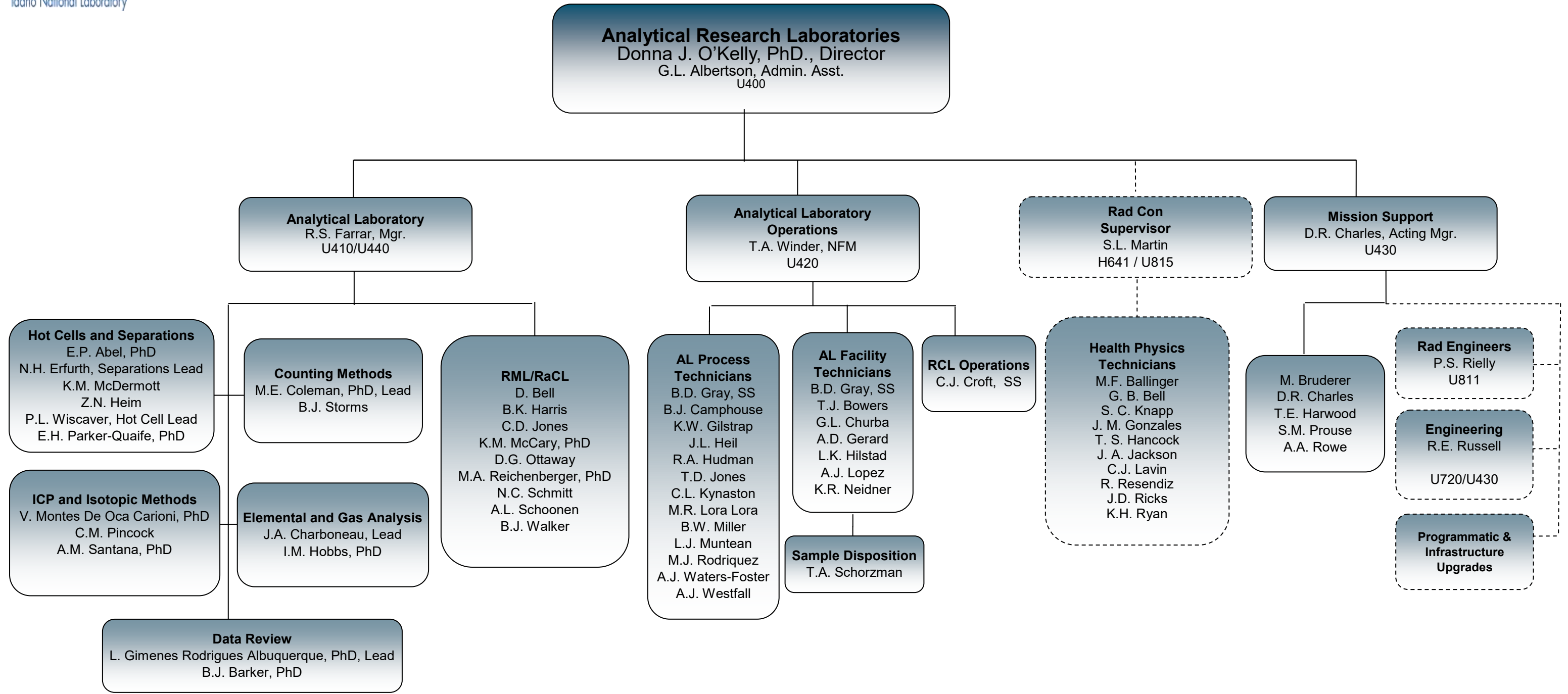
**Characterization & PIE**  
 Colin D. Judge, PhD., Director  
 C. Lord, Scientific Admin. Asst.  
 S. Hathaway, Operations Admin Asst.  
 U200





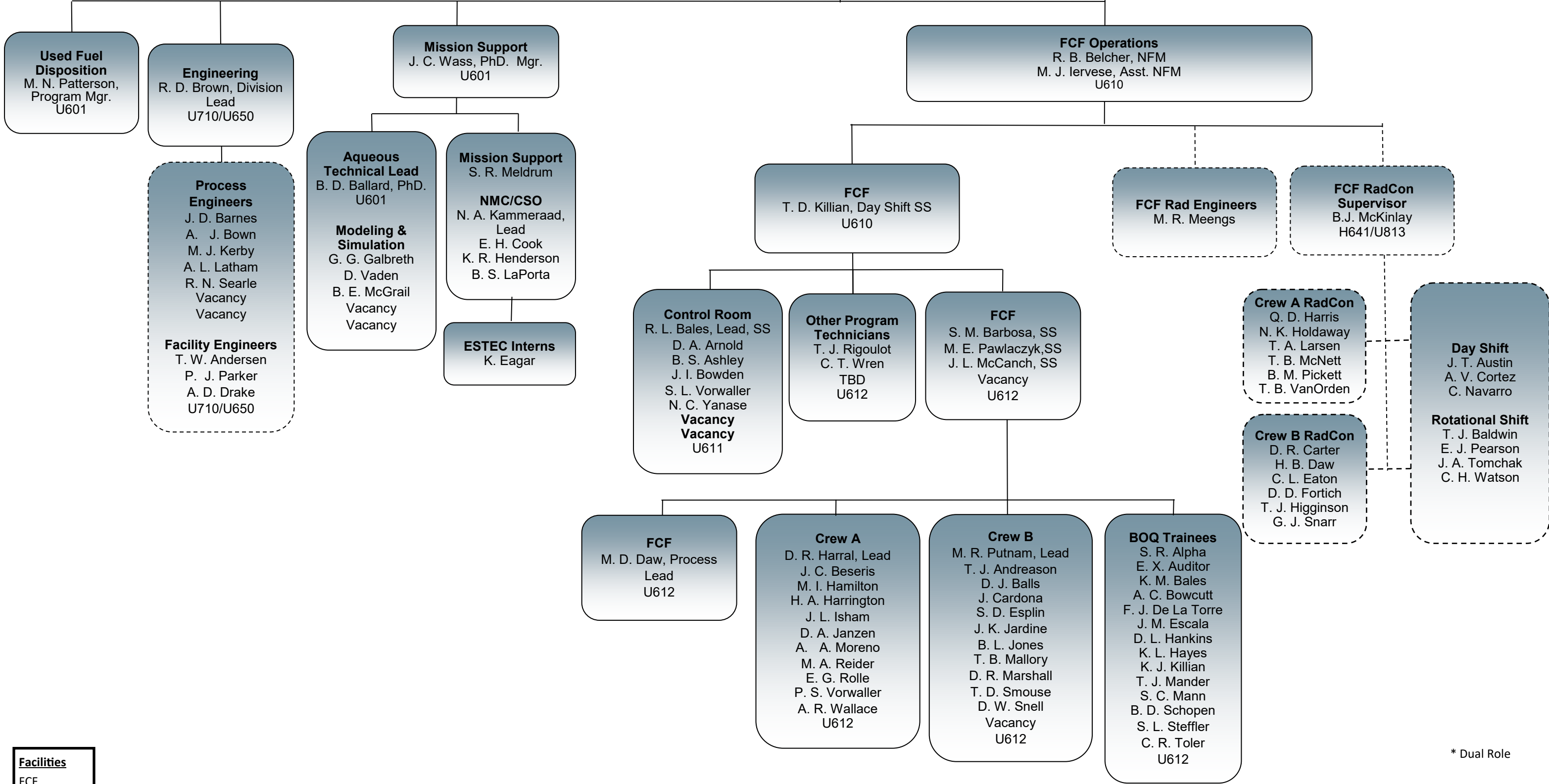


<b>Facilities</b>
SSPSF - 792/792A
736
751
772
RSTSFS - INTEC
1634 - INTEC



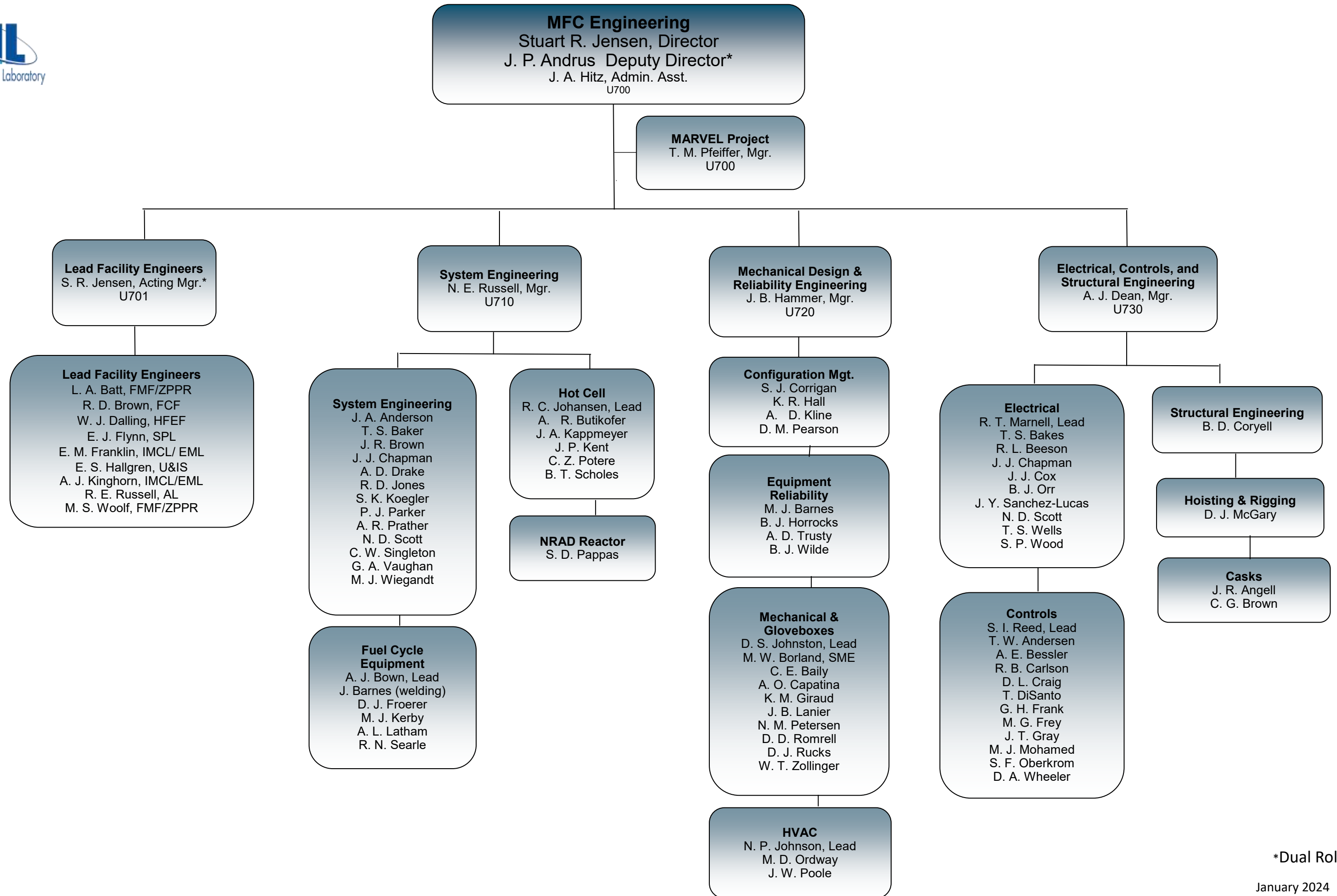
**Facilities**  
Analytical Lab  
RCL

**MFC Fuel Cycle Division**  
**Donna J. O'Kelly, PhD., Director**  
 J. C. Wass, PhD., Deputy Director  
 L. A. Rossi, Admin Asst.\*  
 U600



**Facilities**  
FCF

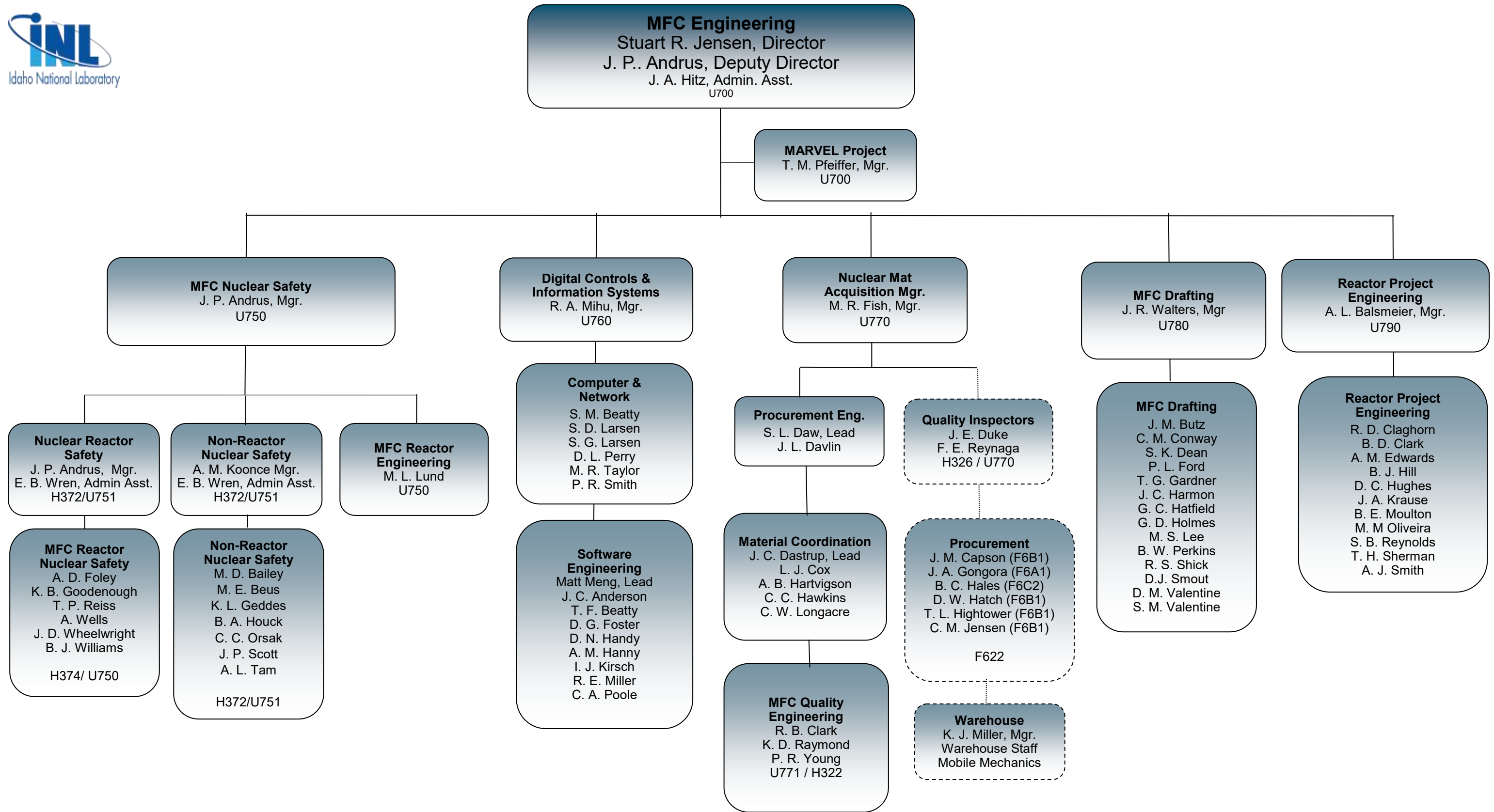
\* Dual Role



\*Dual Role

January 2024





**MFC Safety & Compliance**  
 Alan E. Carvo, Director  
 C. A. Dudziak, Admin Asst.  
 U800

**RadCon**  
 C. M. Johnson, Manager  
 H640/U810

**Field Execution**  
 W. L. Gamett  
 H642/U810

**Staff**  
 D. A. Lucas  
 D. R. Martin  
 H640/U810

**Program Engineers**  
 R. L. Case  
 B. H. Christiansen  
 H670/U810

**Field Execution**  
 A. N. McConeghy, Mgr.  
 H641/U810

**Engineers**  
 B.J. Crawford  
 T. J. Anderson  
 H670/U811

**Engineers**  
 K. L. Clark  
 H670/U811

**Engineer**  
 T. N. Bennett  
 M. A. Albanese  
 H670/U811

**Supervisor**  
 D. A. Hollaway  
 (HFEF, NRAD)  
 H642/U812

**Supervisor**  
 E. T. Wiscaver  
 (IMCL, EML, SPL)  
 H642/U814

**Supervisor**  
 J. D. Johnston  
 (EFF, FASB, FMF,  
 ZPPR, SSPSF,  
 H642/U816

**Supervisor**  
 D. W. Nielsen  
 Program, U&IS &  
 TREAT  
 H641/U818

**U&IS Engineer**  
**TREAT Engineers**  
 J. Roemer  
 H670/U819

**Engineer**  
 P. S. Rielly  
 H670/U819

**Engineer**  
 M. R. Meengs  
 M. J. Vaughan  
 H670/U819

**Engineers**  
 S. Lewis  
 H670/U819

**HPTs**  
 R. L. Alley  
 A. R. Friedel  
 K. J. Hague  
 T. L. Martin  
 J. J. Orner  
 C. L. Perry  
 D. F. Tranter  
 T. M. Villegas  
 A. D. Wren

**HPTs**  
 M. Blattner  
 M. T. Bryant  
 J. D. McCulloch  
 J. A. Price  
 S. L. Smyer  
 R. C. Spears  
 R. J. Stamos  
 L. L. Stecklein  
 C. J. Watt  
 Vacancy

**HPTs**  
 A. S. Adamson  
 J. D. Ashbocker  
 J. A. Boyer  
 M. M. Bryant  
 C. R. Coles  
 K. T. Larson  
 M. D. Monson  
 C. J. Owsley  
 R. J. Sortor  
 B. C. Willoughby

**Program & U&IS HPTs**  
 K. S. Miles

**TREAT HPTs**  
 B. R. Case  
 J. M. Donnelly  
 J. W. Jeffs  
 R. A. Mock

**Supervisor**  
 S. L. Martin  
 (AL, RCL)  
 H641/U815

**HPTs**  
 M. F. Ballinger  
 G. B. Bell  
 J. M. Gonzales  
 T. S. Hancock  
 J. A. Jackson  
 S. C. Knapp  
 C. J. Lavin  
 R. Resendiz  
 J. D. Ricks  
 K. H. Ryan

**Supervisor**  
 B. J. McKinlay  
 (FCF)  
 H641/U813

**Day Shift**  
 J. T. Austin  
 A. V. Cortez  
 C. Navarro  
 Vacancy

**Rotational Shift**  
 T. J. Baldwin  
 E. J. Pearson  
 J. A. Tomchak  
 C. H. Watson

**Crew A RadCon**  
 Q. D. Harris  
 N. K. Holdaway  
 T. A. Larsen  
 T. B. McNett  
 B. M. Pickett  
 T. B. VanOrden

**Crew B RadCon**  
 D. R. Carter  
 H. B. Daw  
 C. L. Eaton  
 D. D. Fortich  
 T. J. Higginson  
 G. J. Snarr

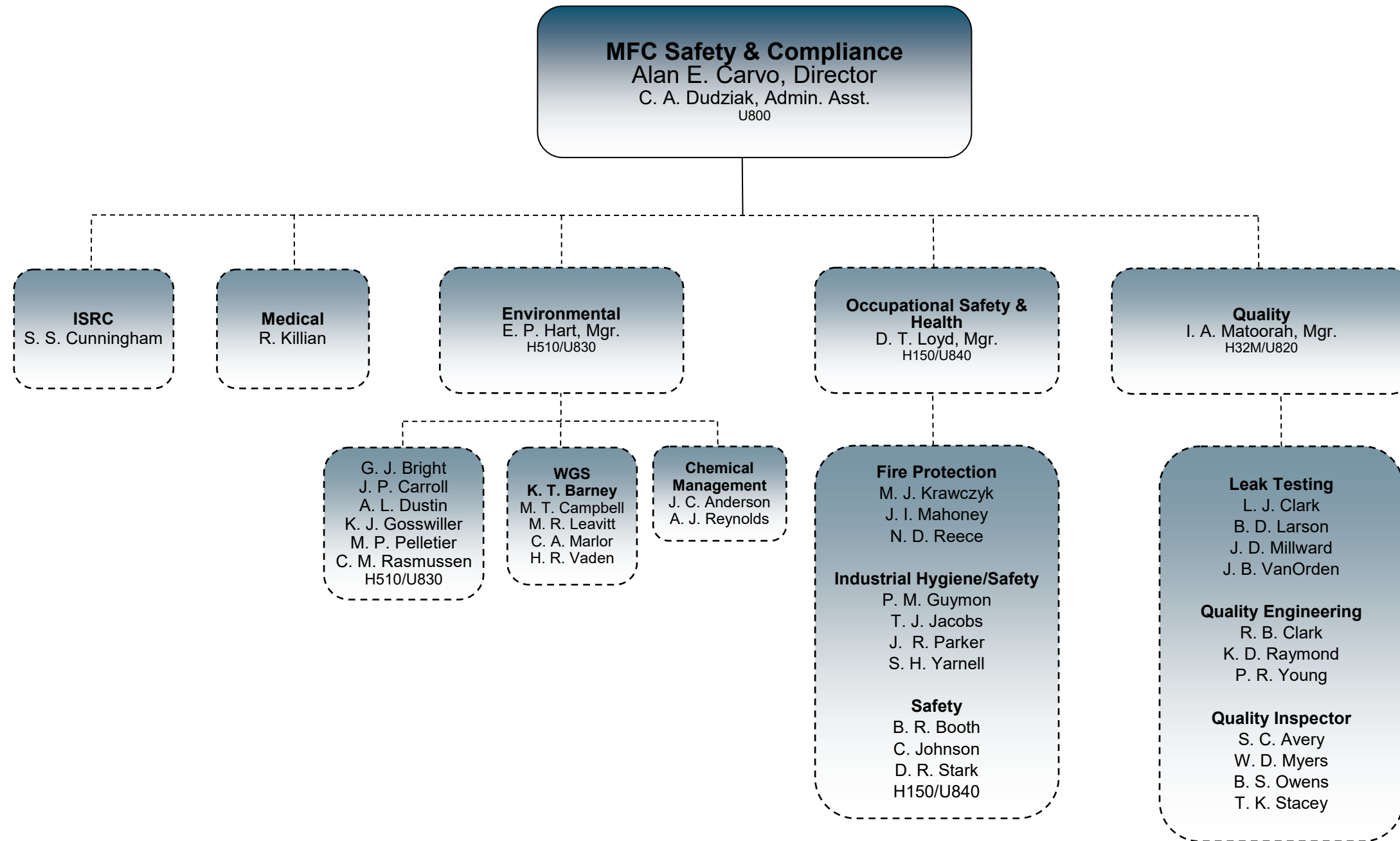
**Supervisor**  
 R.C. Goodrich  
 (INTEC, RH-LLW  
 TSD)  
 H641/U817

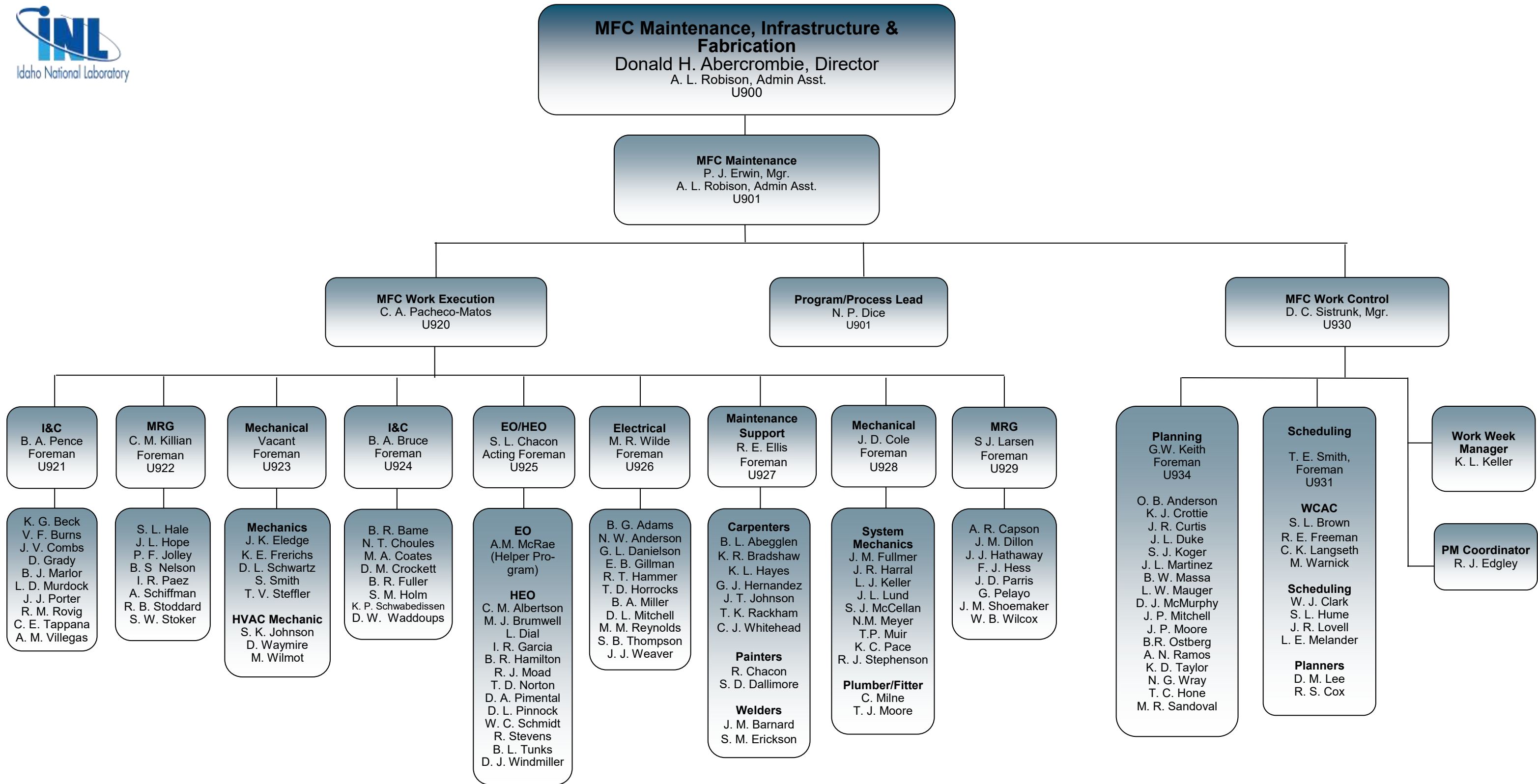
**HPTs**  
 T. E. Bingham  
 K. J. Dawsey  
 G. A. Gallegos  
 C. G. Kohler  
 C. J. Mitchell  
 M. J. Mitchell  
 T. S. Nix  
 M. T. Peck  
 D. Pincock  
 M. L. Simmers  
 J. L. Stanger

**Crew A Radcon**  
 G. T. Hinckley  
 T.J. Leatham

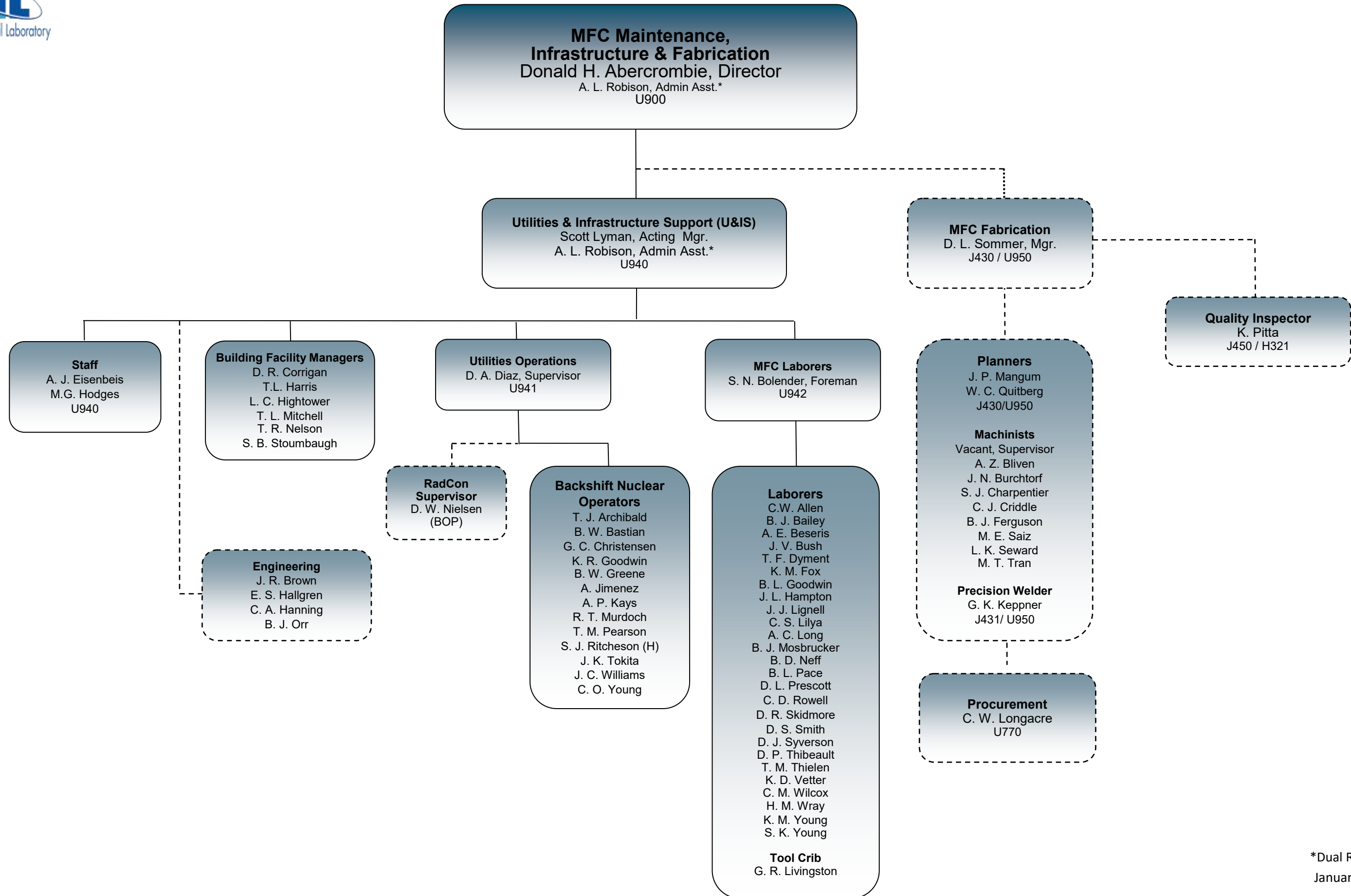
**Crew B Radcon**  
 R. L. Beck  
 A. L. Fowers

**Nights**  
 J. R. Gerard









\*Dual Role  
January 2024

**NOTE: This org chart does not reflect an organizational reporting relationship, but a collaboration of key stakeholders to deliver advanced microreactor strategy.**



**Advanced Reactor Demonstration**

**Ron Crone  
Shawn Hill**

**Project Management**  
Brady Orchard

**Engineering Design Authority**  
Stuart Jensen

**Engineering Manager**  
Aaron Balsmeier

**Procurement Engineering**  
Spencer Daw

**Nuclear Reactor Safety Analysis**  
Jason Andrus

**Training/Documents**  
Tiffany Leavitt

**Maintenance**  
Philip Erwin  
Robert Neibert

**PELE**

**Technical Director**  
Justin Coleman

**Project Manager**  
Bryan Butikofer

**Financials**  
Lakyn Cook

**Reactor Manager / NFM**  
Dan Willcox

**Project Engineer**  
John Krause

**Nuclear Safety**  
Braydon Williams

**System Engineer**  
John Krause

**DOME Test Bed**

**NRIC Program Manager**  
Brad Tomer

**Project Manager**  
Scott Smith  
Josh Kiel

**Project Controls**  
Nathan Burt

**NFM**  
Dan Willcox

**Project Engineer**  
Brad Moulton

**Nuclear Safety**  
Matt Lund

**System Engineer**  
TBD

**MARVEL**

**Technical Director**  
Yasir Arafat

**Project Manager**  
MW Patterson

**Project Controls**  
Trenna Muckleroy

**Reactor Manager / NFM**  
TBD

**Project Engineer**  
Tom Pfeiffer

**Nuclear Safety**  
Doug Gerstner

**Engineering Mgr.**  
Brandon Moon

**System Engineer**  
Carl Baily

**T-REXC Test Bed**

**Technical Director**  
Doug Crawford

**Project Manager**  
Justin Pugmire

**Project Controls**  
Spencer Barrett

**NFM**  
TBD

**Project Engineer**  
Dave Start

**Nuclear Safety**  
Doug Gerstner

**Engineering Mgr.**  
Brandon Moon

**System Engineer**  
Shawn Jensen

**MCRE**

**Technical Director**  
Nick Smith

**Project Manager**  
John Baker

**Project Controls**  
Dan Hanson

**Reactor Manager / NFM**  
Mike Ruddell

**Project Engineer**  
Mitch Woolf

**Nuclear Safety**  
Troy Reiss

**System Engineer**  
Scott Reynolds

**Fuel Handling Engineering**  
Jeff Anderson

**FSSL Technical Director**  
James King

**FSSL Eng.**  
Denis Johnston

**LOTUS Test Bed**

**NRIC Program Manager**  
Brad Tomer

**Project Manager**  
Scott Smith  
Josh Kiel

**Project Controls**  
Dee Radford

**NFM**  
Mike Ruddell

**Project Engineer**  
Scott Reynolds

**Nuclear Safety**  
Troy Reiss

**System Engineer**  
TBD